

Connecting to a wireless network



Joining a wireless network in Windows XP

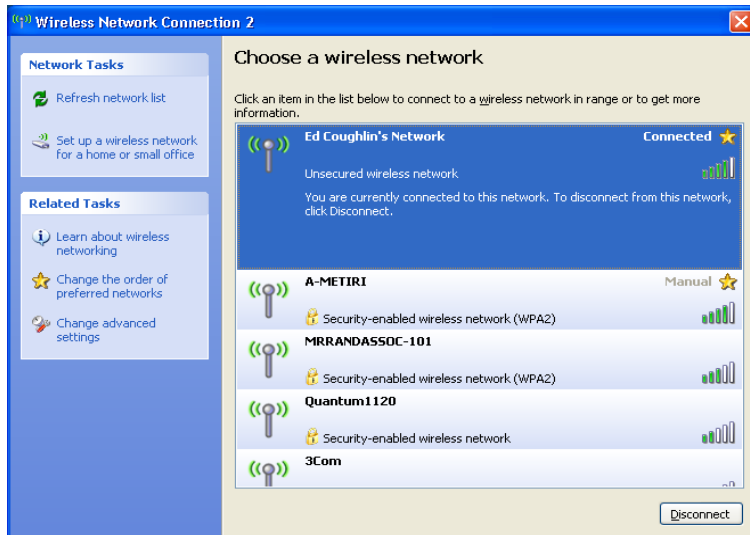
Accessing Wireless Network Options

- At the bottom right of the screen click on the picture of the computer with a wireless signal coming out of it as shown below
- From the menu select the “View Available Wireless Networks” option



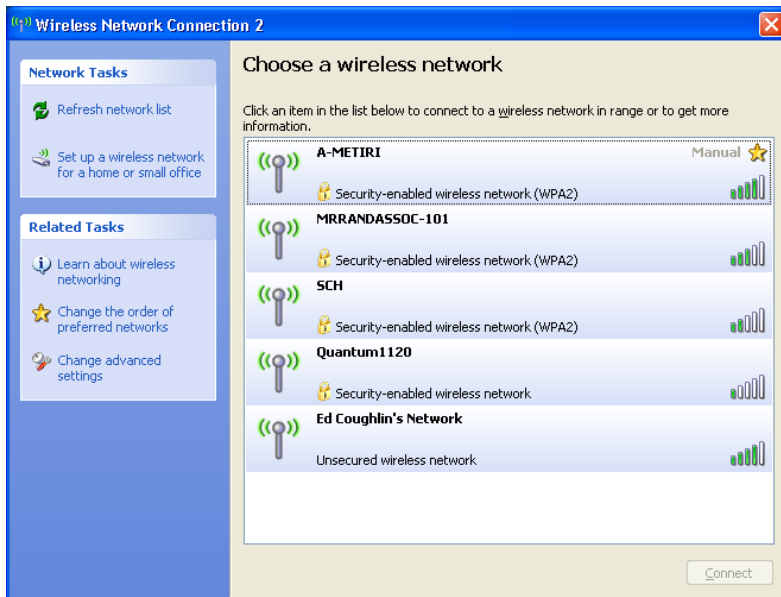
Connecting to an Open Network

- Open networks are indicated by the word “Unsecured” underneath their name and the lack of a lock icon
- These networks are open for anyone to use but information on them is not sent securely. They are most often found in public places such as a coffee shop or fast food restaurant
- Click twice on the name of the network you want to join and you will be given a warning prompt. Click yes if you wish to join the network.



Connecting to a secure network

- Closed networks are indicated by a lock icon and the text “Security-enabled wireless network” followed by the type of password encryption used by the network
- Click twice on the network you wish to join and type the network password twice into the window that comes up. Click “Connect” to join the network



Confirming you are connected

- Below is a screenshot of what it will look like if you are connected correctly.
- The x next to the icon for the wireless network goes away and when you mouse over the icon it reads “Status: Connected”

