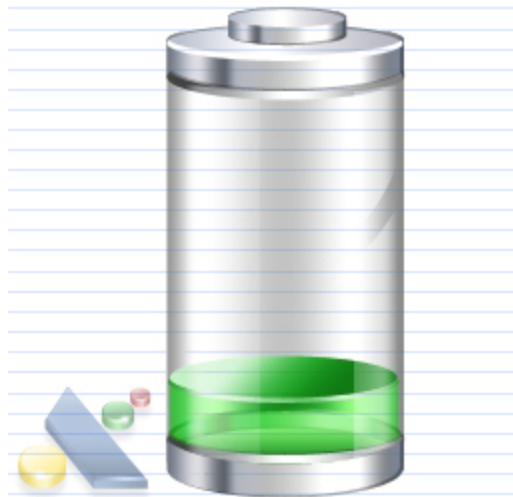


Battery Information and Settings in Windows



Checking Battery Levels and
Optimizing Power Settings for Longer
Battery Life

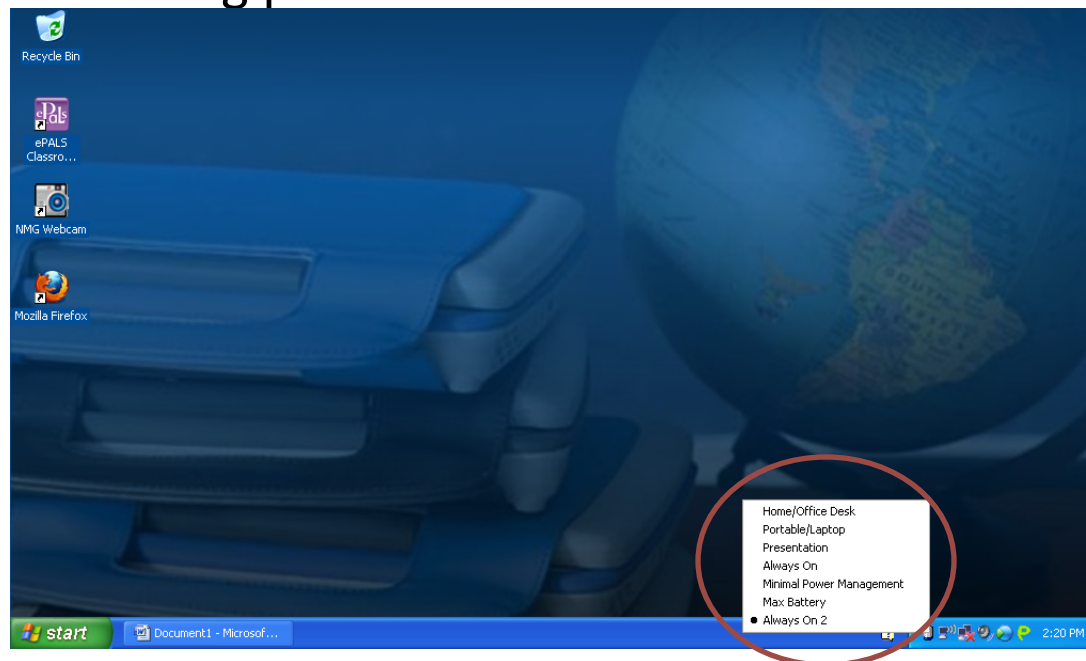
The Battery Indicator

- By Default the Battery Indicator will Appear when you unplug your computer.
- This icon gives a visual representation of the amount of charge left in your Battery.
- Less blue indicates less charge left. In this case the battery is 25% full.

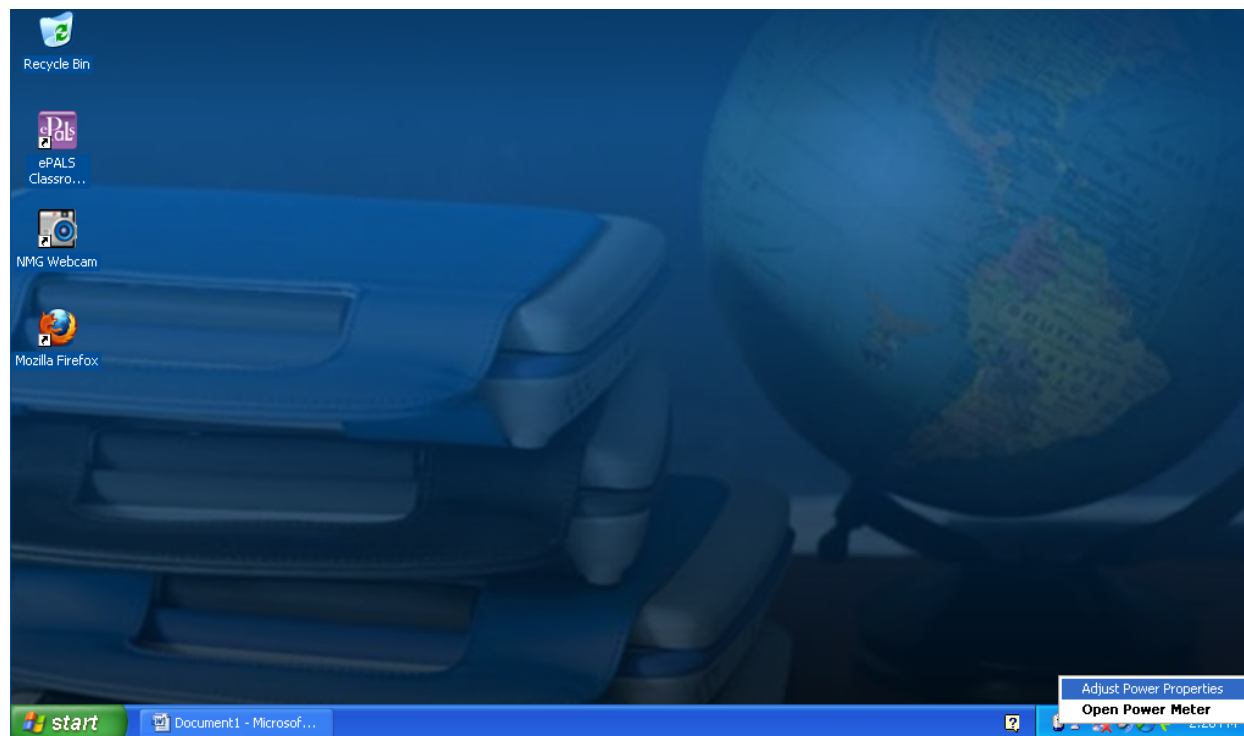


Changing Battery Usage Options Quickly

- If you left click on the battery icon it will give you several setting options.
- These options range from “Max Battery” to “Always On”
- Max Battery will reduce computer speed and turn off the monitor quickly and deactivate the computer when it is not in use
- Always On will never deactivate the computer and only dim the monitor after long periods of non use

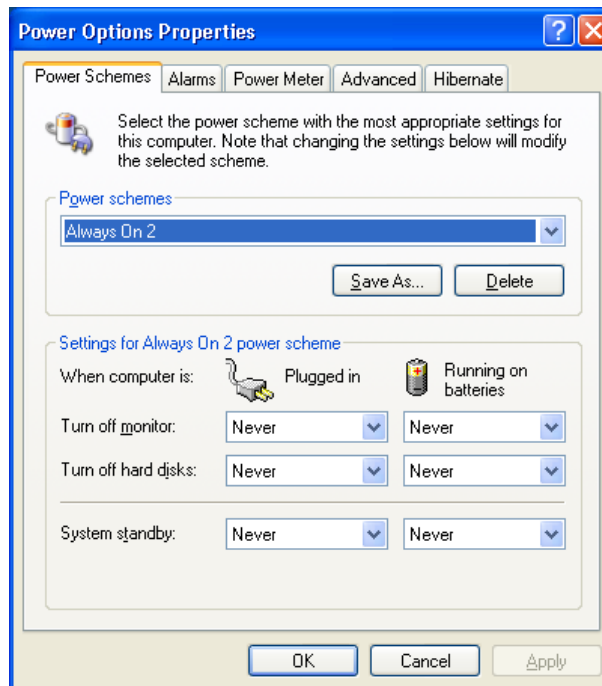


- To make more detailed changes to power settings you will use the Power Properties preferences.
- To access these preferences right click on the battery icon and select Adjust Power Properties



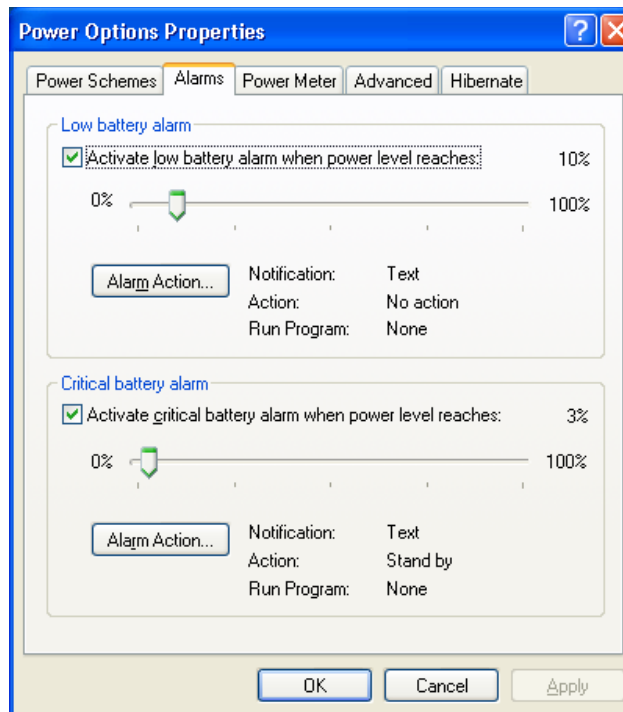
Custom Power Schemes

- On the first tab of Power Options Properties you can change the power scheme or customize power schemes
- For each power scheme you can change the length of idle time before the computer powers down the monitor and hard drive.
- Additionally you can set a length of time the computer can be idle before it enters battery saving standby mode.
- Standby mode turns off the computer until the keyboard or mouse is touched.



Battery Level Alarms

- You can set your laptop to make a text or sound warning when the battery drops below a defined level of power.
- You can set different levels for low battery and critical battery.
- The default settings are a text warning for when the battery is below 10% and entering standby mode at 3% automatically.



Advanced Options

- On the advanced options tab you can choose to show the battery icon on the taskbar even when the computer is plugged in.
- You can choose whether or not a password is required to use the computer after it returns from standby mode
- You can set what the computer does when the lid is closed and when you press the power button (circled below).
- There is not a sleep button on the i-Buddie Laptop.

