

Web OS Switch Software



BBI Quick Guide

Nortel Networks Part Number: 213164, Revision A, July 2000



50 Great Oaks Boulevard
San Jose, California 95119
408-360-5500 Main
408-360-5501 Fax
www.nortelnetworks.com



Copyright 2000 Nortel Networks, Inc., 50 Great Oaks Boulevard, San Jose, California 95119, USA. All rights reserved. Part Number: 213164, Revision A.

This document is protected by copyright and distributed under licenses restricting its use, copying, distribution, and decompilation. No part of this document may be reproduced in any form by any means without prior written authorization of Alteon WebSystems, Inc. Documentation is provided “as is” without warranty of any kind, either express or implied, including any kind of implied or express warranty of non-infringement or the implied warranties of merchantability or fitness for a particular purpose.

U.S. Government End Users: This document is provided with a “commercial item” as defined by FAR 2.101 (Oct 1995) and contains “commercial technical data” and “commercial software documentation” as those terms are used in FAR 12.211-12.212 (Oct 1995). Government End Users are authorized to use this documentation only in accordance with those rights and restrictions set forth herein, consistent with FAR 12.211- 12.212 (Oct 1995), DFARS 227.7202 (JUN 1995) and DFARS 252.227-7015 (Nov 1995).

Nortel Networks, Inc. reserves the right to change any products described herein at any time, and without notice. Nortel Networks, Inc. assumes no responsibility or liability arising from the use of products described herein, except as expressly agreed to in writing by Nortel Networks, Inc. The use and purchase of this product does not convey a license under any patent rights, trademark rights, or any other intellectual property rights of Nortel Networks, Inc.

WebOS, BBI, Alteon 180, Alteon 700, and ACEdirector are trademarks of Nortel Networks, Inc. in the United States and certain other countries. Microsoft®, Windows®, and Windows NT® are registered trademarks of Microsoft Corporation in the United States and in other countries. Netscape® and Netscape Navigator® are registered trademarks of Netscape Communications Corporation in the United States and other countries. Any other trademarks appearing in this manual are owned by their respective companies.



Contents

Preface 5

- Who Should Use This Book 5
- Related Documentation 5
- Typographic Conventions 6
- Contacting Alteon WebSystems 7

Chapter 1: Getting Started 9

- Features 9
- Requirements 9
- Switch Set Up 10
 - IP Interfaces 10
 - Enabling/Disabling BBI Access 10
- Web-Browser Set Up 10
- Starting the Web OS BBI 11

Chapter 2: Web OS BBI Basics 13

- Toolbar 14
 - Context Buttons 14
 - Commands 14
- Navigation Window 15
- Forms Window 15
- Message Window 16

Chapter 3: Configuring the Switch 17

Chapter 4: Viewing Statistics 19

Chapter 5: The Dashboard 21



Preface

Web OS Browser-Based Interface (BBI) software is included in the Alteon WebSystems family of Web switches. The BBI software lets you use your Web-browser to access switch information and statistics, and to perform switch configuration via the Internet.

This *Quick Guide* provides an overview of how to access and use the Web OS BBI.

Who Should Use This Book

This *Quick Guide* is intended for network installers and system administrators engaged in configuring and maintaining a network. It assumes that you are familiar with your Alteon WebSystems Web switch, your Web-browser, Ethernet concepts, IP addressing, the IEEE 802.1d Spanning-Tree Protocol, and SNMP configuration parameters.

Related Documentation

For documentation on installing the switch physically, see the *Hardware Installation Guide* for your particular switch model.

For details about the switch information, statistics, and configuration parameters available using the Web OS BBI, see the *Web OS Command Reference* and *Web OS Application Guide*.

These manuals should have accompanied your Alteon WebSystems switch.

Typographic Conventions

The following table describes the typographic styles used in this book.

Table 1 Typographic Conventions

Typeface or Symbol	Meaning	Example
AaBbCc123	This type is used for names of commands, files, and directories used within the text. It also depicts on-screen computer output and prompts.	View the <code>readme.txt</code> file. Main#
AaBbCc123	This bold type appears in command examples. It shows text that must be typed in exactly as shown.	Main# sys
<i>AaBbCc123</i>	This italicized type appears in command examples as a parameter placeholder. Replace the indicated text with the appropriate real name or value when using the command. This also shows book titles, special terms, or words to be emphasized.	To establish a Telnet session, enter: host# telnet <i>IP-address</i> Read your <i>User's Guide</i> thoroughly.
[]	Command items shown inside brackets are optional and can be used or excluded as the situation demands. Do not type the brackets.	host# ls [-a]

Contacting Alteon WebSystems

Use the following information to access Alteon WebSystems support and sales.

- URL for Alteon WebSystems Online:

<http://www.alteonwebsystems.com>

This website includes product information, software updates, release notes, and white papers. The website also includes access to Alteon WebSystems Customer Support for accounts under warranty or that are covered by a maintenance contract.

- E-mail access:

support@alteon.com

E-mail access to Alteon WebSystems Customer Support is available to accounts that are under warranty or covered by a maintenance contract.

- Telephone access to Alteon WebSystems Customer Support:

1-888-Alteon0 (or 1-888-258-3660)

1-408-360-5695

Telephone access to Alteon WebSystems Customer Support is available to accounts that are under warranty or covered by a maintenance contract. Normal business hours are 8 a.m. to 6 p.m. Pacific Standard Time.

- Telephone access to Alteon WebSystems Sales:

1-888-Alteon2 (or 1-888-258-3662), and press 2 for Sales

1-408-360-5600, and press 2 for Sales

Telephone access is available for information regarding product sales and upgrades.



CHAPTER 1

Getting Started

This chapter briefly describes the software features and requirements for the Web OS Browser-Based Interface (BBI), and explains how to access the Web OS BBI start page.

Features

The network administrator can access all switch configuration and monitoring functions through the Web OS BBI, a Web-based switch management interface. The Web OS BBI has the following features:

- All of the same configuration and monitoring functions as the command-line interface
- Intuitive and easy-to-use interface structure
- Nothing to install; the Web OS BBI is part of the Web OS switch software
- Two levels of password protection
- Can be upgraded as future software releases are available

Requirements

- Alteon 180 series, Alteon AD2/AD3/AD4, or Alteon 700 series Web switches
- Installed Web OS switch software
- PC or workstation with network access to the switch
- Frame-capable Web-browser software, such as the following:
 - Netscape Navigator 3.0x or higher
 - Internet Explorer 3.0x or higher
- JavaScript enabled in your Web-browser

Switch Set Up

Before you can access the Web OS BBI, minimal configuration is required on the switch.

IP Interfaces

At least one IP interface must be configured on the switch. This is usually done from the command-line interface during first-time switch set up. Each IP interface address provides a point of access for Web OS BBI switch management.

For complete information about configuring IP interfaces, see your *Web OS Command Reference* manual.

Enabling/Disabling BBI Access

By default, Web OS BBI access is enabled. If you need to disable or re-enable access, use one of the following commands from the command-line interface (depending on the Web OS software version):

Web OS Release 5.x and 8.x

```
>> Main# /cfg/sys/http <disable|enable (or just d|e)>
```

Web OS Release 7.x

```
>> Main# /cfg/sys/web <disable|enable (or just d|e)>
```

For more information on the accessing and configuring the switch through the command-line interface, see your *Web OS Command Reference* manual.

Web-Browser Set Up

Most modern Web-browsers work with frames and JavaScript by default, and require no additional set up. However, you should check your Web-browser's features and configuration to make sure frames and JavaScript are enabled.

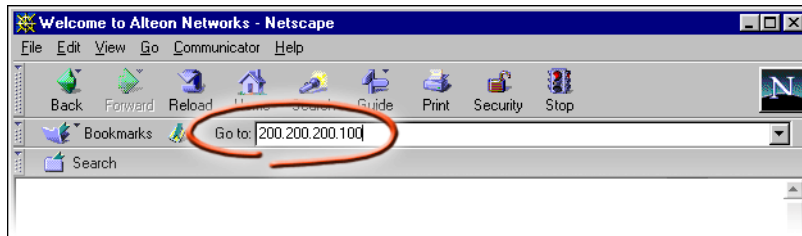
NOTE – JavaScript is not the same as Java. Please make sure that JavaScript is enabled in your Web-browser.

Starting the Web OS BBI

When the switch and browser set up is done, follow these steps to launch the Web OS BBI:

1. **Start your Web-browser.**
2. **Enter the switch IP interface address in the Web-browser's URL field.**

For example, consider an IP interface with a network IP address of 200.200.200.100. Using Netscape Navigator, you could enter the following:

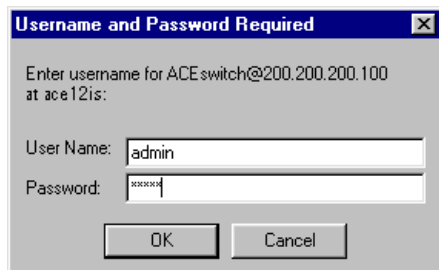


If the IP interface's address has a name on your local domain name server, you could enter the name instead. For example, with Internet Explorer, you could enter the following:



3. **Log in to the switch.**

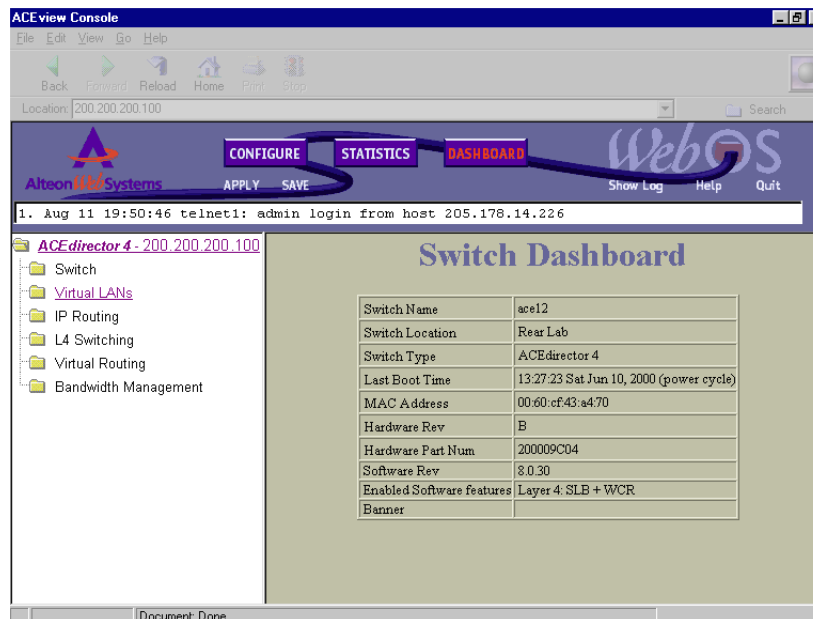
If your switch and browser are properly configured, you will be asked to enter a password:



Enter the account name and password for the switch's administrator or user account. For more password information, see your *Web OS Command Reference* manual.

4. Allow the Web OS Dashboard page to load.

When the proper account name and password combination is entered, the Web OS BBI Dashboard page is displayed in your browser's viewing area:

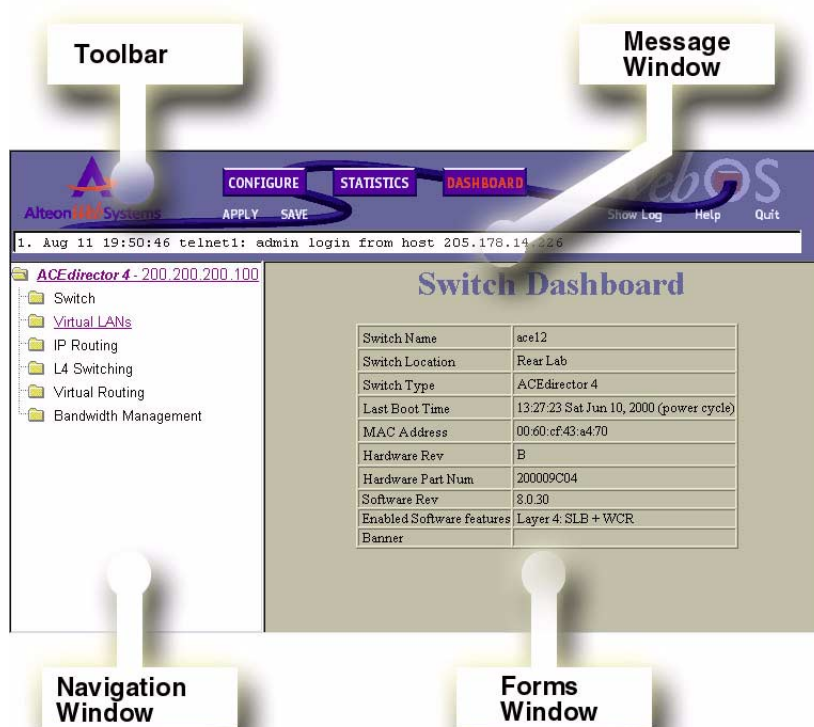


NOTE – There may be a slight delay while the Dashboard page is being initialized. You should not stop the browser while loading is in progress. When loading is complete, a folder icon will appear in the left-hand Web OS BBI window.

CHAPTER 2

Web OS BBI Basics

Once you are properly logged in, the Web OS BBI appears in your Web-browser's viewing window:



There are four main regions on the Web OS screen:

- The toolbar is used for selecting the context for your actions in the other windows.
- The navigation window is used for selecting particular items or features to act upon.
- The forms window is used for viewing or altering switch information.
- The message window is used for displaying the 10 latest switch syslog messages and events.

Toolbar

Context Buttons

The toolbar is used for setting the context for your actions in the application. There are three context buttons:

Configure	When selected, you can access the switch configuration forms. Configuration forms can be altered only if you are logged in using the administrator account. Select an item in the navigation window to display the desired configuration form in the forms window.
Statistics	When selected, you can view information about switch performance. Select an item in the navigation window to display the desired statistics in the forms window.
Dashboard	This context button is selected by default when the Web OS BBI is first activated. When selected, basic switch information and status can be viewed in the forms window. Select an item in the navigation window to display the desired dashboard information in the forms window.

When a context icon is selected, the button will be highlighted as a reminder of the current context mode.

Commands

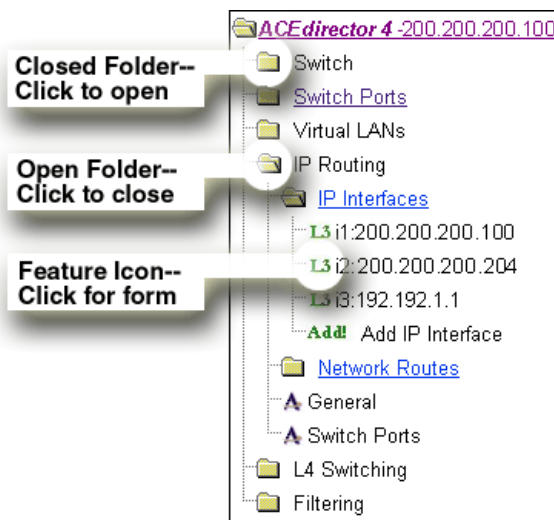
The following general commands are available on the toolbar:

Apply	Pending configuration changes do not take effect until the Apply command is selected. Once applied, all changes (except enabling/disabling Spanning-Tree Protocol) take effect on the switch immediately. If you do not save the changes, however, they will be lost the next time the switch is rebooted.
Save	Writes applied configuration changes to non-volatile flash memory on the switch.
Help	Opens a new Web-browser window for displaying the basic online help information. Close the help browser when finished.
Show Log	Opens a new Web-browser window for displaying the 10 most recent switch log messages. Close the log browser when finished.
Quit	Log off the switch and exit the Web OS BBI.

Navigation Window

The navigation window is used for selecting a particular switch feature to act upon. Status, statistics, or configuration forms for the selected item will appear in the forms window, depending on the context chosen on the toolbar.

The navigation window contains a tree of folders, sub-folders, and feature icons:



You can click on any closed folder to open it and reveal its contents. Click on any open folder to close it. Click on any feature icon to load the appropriate status, statistics, or configuration form in the forms window.

Some folders also have forms. If the name of the folders is underlined, click on the name to display the appropriate form.

Forms Window

When a feature icon is selected on the navigation window, a status, statistics, or configuration form is displayed in the forms window. The exact nature of the form depends on the current context selected on the toolbar, as well as the type of information available. Not all feature icons have forms for all contexts.

Some forms display switch information such as settings, status, or statistics. Others allow you to make configuration changes to switch parameters.

Message Window

Switch log messages are generated by events such as login/logout activity, password changes, configuration changes, and switch reboot. The Web OS BBI records the ten most recent messages and displays each one briefly in the message window. When the tenth message has been displayed, the cycle is repeated.

To view all ten messages at the same time, select the Show Log command on the toolbar. A new Web-browser window will be opened to display the log information. Close the window when finished.

For a list of `syslog` messages, see your *Web OS Command Reference* manual.

CHAPTER 3

Configuring the Switch

The Web OS BBI can be used to view and change switch configuration parameters. The same configuration parameters that are available through the switch's command-line interface are present on the Web OS BBI configuration forms.

The following provides a basic outline for switch configuration. You should first be familiar with configuration as covered in the *Web OS Command Reference* manual.

NOTE – You must be logged in using the administrator account in order to change switch configuration settings.

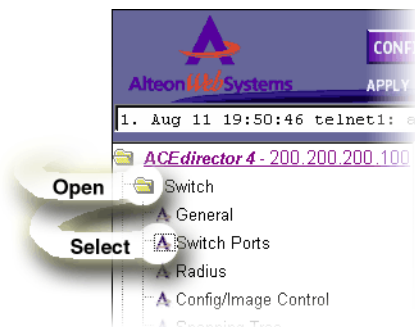
Configuration Steps

Follow these basic steps for viewing or configuring switch parameters:

1. Select the Configure context button in the Web OS toolbar:



2. Select a feature icon in the navigation window. For example:



3. View or make changes to the settings shown in the forms window. For example:

Alteon Web Systems

CONFIGURE STATISTICS DASHBOARD

APPLY SAVE

Show Log Help

8 Jul 5 11:31:28 NOTICE: telnet/ssh-1: admin logout from Telnet/SSH

ACEdirector 4 -200.200.200.100

Switch Management Processor Configuration

Switch

General

Switch Ports

Radius

Config/Image Control

Spanning Tree

Port Mirroring

Trunk Groups

Virtual LANs

Add Add VLAN

IP Routing

L4 Switching

Virtual Routing

Bandwidth Management

Switch IP Address 172.19.1.201

Switch IP Subnet Mask 255.255.255.0

Enable/Disable BOOTP for Management Disabled

Syslog Host Address Enabled

Second Syslog Host IP Address Disabled

Facility of Syslog Host local 0

Facility of Second Syslog Host local 0

Current Date 7/6/2000

Current Time 14:20:39

NOTE – Fields which must be configured for proper switch operations are highlighted on the forms in **GREEN** type. Items which load other forms when selected are underlined.

4. Submit, reset, or delete the form contents using buttons on the bottom of the form.

- Submit** When selected, the form sent to the switch. Any configuration changes are placed in the “pending” state and do not take effect until the toolbar Apply command is given.
- Reset** When selected, the form fields are reset to their last submitted values.
- Delete** This button is available for configuration items that can be deleted. When selected, the featured item is slated to be removed from the switch configuration database. The item is not actually deleted, however, until the toolbar Apply command is given.

5. Apply and save your changes using the toolbar commands.



Pending configuration changes (including deletions) do not take effect until the Apply command is selected.

Applied changes take effect on the switch immediately, but will be lost the next time the switch is rebooted unless the Save command is selected.

CHAPTER 4

Viewing Statistics

The Web OS BBI can be used to view a variety of switch performance statistics. The same statistics that are available through the switch's command-line interface are present on the Web OS BBI statistics forms.

The following provides a basic outline for viewing statistics. You should first be familiar with available statistics as covered in the *Web OS Command Reference* manual.

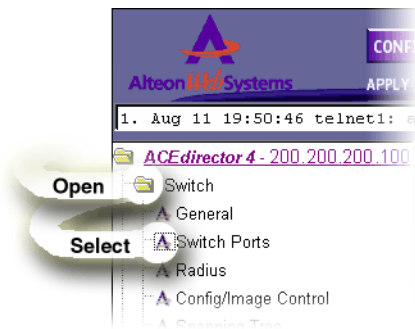
Steps for Displaying Statistics

Follow these basic steps for viewing switch statistics:

1. Select the Statistics context button in the Web OS toolbar:



2. Select a feature icon in the navigation window. For example:



3. View the statistics in the forms window. For example:

Alteon WebOS Systems

CONFIGURE STATISTICS DASHBOARD

APPLY SAVE

Show Log Help Quit

8. Jul 5 11:31:28 NOTICE: telnet/ssh-1: admin logout from Telnet/SSH

ACEdirector 4 - 200.200.200.100

- Switch
 - General
 - Switch Ports
 - Radius
 - Config/Image Control
 - Spanning Tree
 - Port Mirroring
 - Trunk Groups
- Virtual LANs
- IP Routing
- L4 Switching
- Virtual Routing
- Bandwidth Management

Switch Ports Statistics Summary

Switch Port	InPackets	OutPackets	Total Errors
<u>1</u>	16885497	1100490	16
<u>2</u>	15965	16734	0
<u>3</u>	0	0	0
<u>4</u>	0	0	0
<u>5</u>	0	0	0
<u>6</u>	0	0	0
<u>7</u>	0	0	0
<u>8</u>	0	0	0
<u>9</u>	0	0	0

NOTE – Items which load other forms when selected are underlined.

CHAPTER 5

The Dashboard

The Web OS BBI can be used to view the present settings and operating status of a variety of switch features. The same information available through the switch's command-line interface is present on the dashboard forms.

The following provides a basic outline for viewing the dashboard forms. You should first be familiar with configuration as covered in the *Web OS Command Reference* manual.

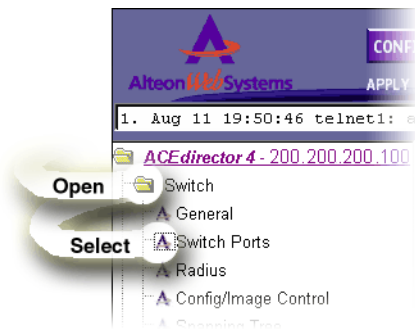
Steps for Displaying Dashboards

Follow these basic steps for viewing switch dashboard forms:

1. Select the Dashboard context button in the Web OS BBI toolbar:



2. Select a feature icon in the navigation window. For example:



3. View information shown in the forms window. For example:

The screenshot shows the Web OS BBI interface. The top navigation bar includes 'CONFIGURE', 'STATISTICS', and 'DASHBOARD' tabs. Below the tabs is a status bar showing the date and time, and a message: '1. Jun 28 10:07:00 NCelnet/ssh-1: admin logout from Telnet/SSH'. The left sidebar shows a tree view of configuration options, with 'Switch Ports' selected. The main area displays a table titled 'Switch Ports Dashboard'.

Status	Switch Port Info	Operational Status	Speed Duplex FlowCld	Input Frames Output Frames	LinkState Changes Total Errors
	<u>Port1</u> : stp: FORWARDING rmon: disabled tagging: disabled PVID: 1	operational	100/Half/None	19460629 1100098	1 16
	<u>Port2</u> : stp: DISABLED rmon: disabled tagging: disabled PVID: 1	operational	100/Half/None	16156 22639	12 0
	<u>Port3</u> : stp: DISABLED rmon: disabled tagging: disabled PVID: 1	operational	Any/Both/Both	0 0	0 0
	<u>Port4</u> : stp: DISABLED rmon: disabled tagging: disabled PVID: 1	operational	Any/Both/Both	0 0	0 0
	<u>Port5</u> : stp: DISABLED rmon: disabled tagging: disabled PVID: 1	operational	Any/Both/Both	0 0	0 0
	<u>Port6</u> : stp: DISABLED rmon: disabled tagging: disabled PVID: 1	operational	Any/Both/Both	0 0	0 0
	<u>Port7</u> : stp: DISABLED rmon: disabled tagging: disabled PVID: 1	operational	Any/Both/Both	0 0	0 0

NOTE — Items which load other forms when selected are underlined.